



FACTSHEET

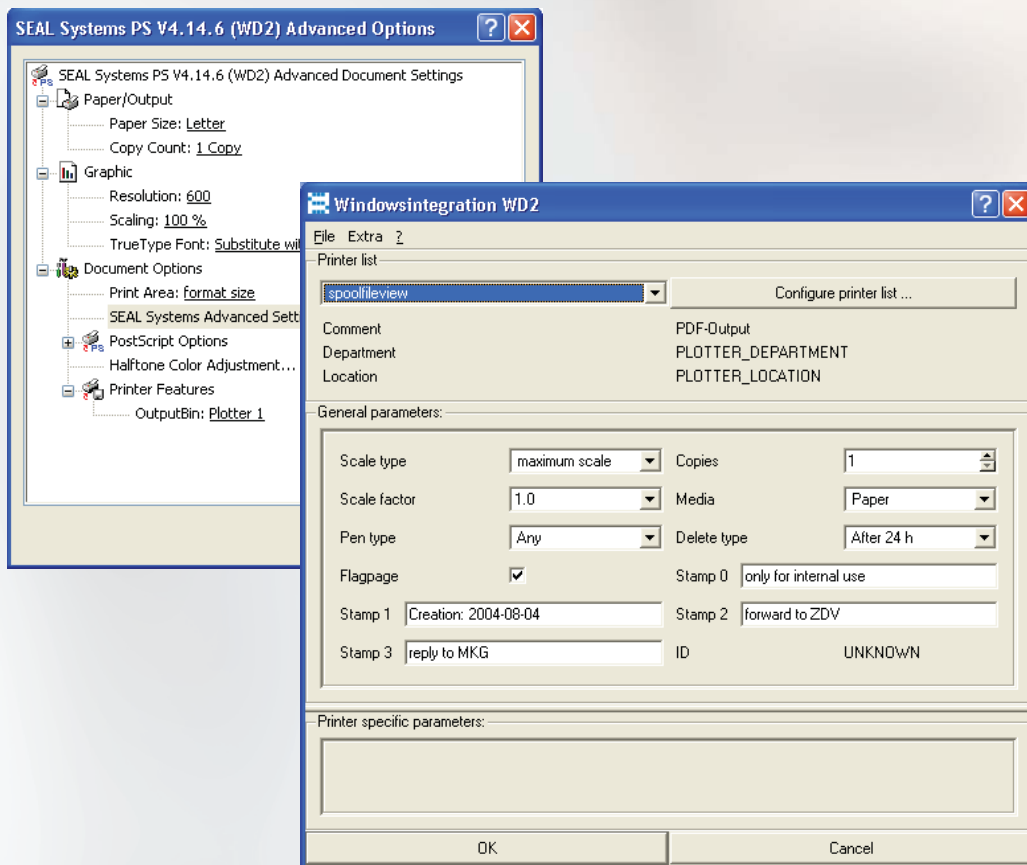


SEAL SYSTEMS
THE DIGITAL PAPER FACTORY

PLOSSYS® netdome

SEAL SYSTEMS WINDOWS DRIVER → DOCUMENT OUTPUT
MANAGEMENT SERVICES USE FROM ALL WINDOWS APPLICATIONS

// The Windows driver from SEAL Systems is a uniform standard driver for all devices, which connect to PLOSSYS® netdome or gXnetplot. The driver was optimized for large size processing and destination device independent usage.



∴ RANGE OF USE

The method „with print/plot client“ is recommend where standard software from SEAL Systems is implemented. Additionally this version is a cost saving alternative when output files are generated via background tasks (e.g. long term formats for digital archiving directly out of Windows applications).

The method „direct driver“ is suited especially for environments, where all PLOSSYS® netdome or gXnetplot devices have to be triggered by an output driver, as well as when particular features and services of a document output management solution from SEAL Systems must be used.

SEAL Systems Windows Driver

::: BENEFIT

The SEAL Systems Windows driver is the ideal integration for all CAD, office or publishing applications which utilize standard Windows operations.

- One Windows driver for all devices
- Supports large format and oversize
- Uniform page layout on all devices
- Simple installation
- PLOSSYS® and gXnetplot for all Windows applications: Office, CAD, publishing
- Use of all PLOSSYS® parameters

::: FUNCTION

There are two operating versions:

- Version „print/plot client“ uses a post process standard client of SEAL Systems for selection and setting of the output options.
- Version „direct driver“ has integrated a dialog with selection of output parameters.

„With print/plot client“

The SEAL Systems Windows driver replaces a standard Windows driver. The SEAL Systems driver is ideally tuned to the output management solutions PLOSSYS® netdome and gXnetplot:

- Enhanced identification of the orientation of documents
- Enhanced process of large size and oversize drawings
- Enhanced manipulation of embedded texts
- Sheet possible with variable size (for CAD)

All familiar settings for a Windows driver are existing. The selection and setting of more output parameter occurs after the output file generation via a print/plot client of SEAL Systems: PAD, P2P, Priplo or Setplo. Advantage: Already existing client infrastructures and user operations will remain the same.

„Direct driver“

The features corresponds to the method „with print/plot client“. Additionally a special dialog can be opened for selection and setting of output options for the output file generation. The dialog module is centrally pre-configurable and contains adjustable options for common and device specific settings.

The setting dialogs are carried out before the print file generation.

Additional Advantages:

- Windows conformed operation
- Input of all parameters before printing
- Comparison of the print parameters from Windows and SEAL Systems
- Enhanced support of network printers and terminal server
- Central installation possible
- Central configuration possible

::: RELATED PRODUCTS

WIN Link

SEAL Systems Port-monitor for integration of SEAL Systems output and archive clients to standard windows driver.

::: DELIVERY SIZE

- License software
- Installation procedure
- Documentation as PDF

::: SYSTEM ENVIRONMENT

Windows 7, Windows 2003/2008 Server.

::: SYSTEM REQUIREMENTS

- PLOSSYS® netdome or gXnetplot, in each case with PostScript processing
- optional: output client PAD, P2P, Priplo or Setplo

::: LICENSING

The licensing id based per PLOSSYS® netdome or gXnetplot, regardless of the number of users.

::: PRODUCT CODE

B-WD



Microsoft
CERTIFIED
 Partner