



FACTSHEET



SEAL SYSTEMS
THE DIGITAL PAPER FACTORY

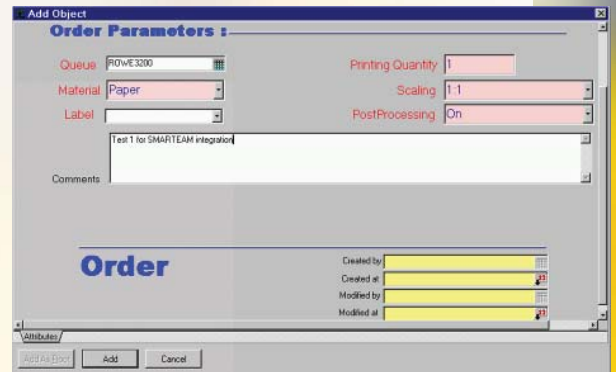
PLOSSYS® netdome System Integrations

DOCUMENT OUTPUT MANAGEMENT-FUNCTIONS FOR SMARTEAM®

→ COMPLETE OUTPUT MANAGEMENT FROM THE PDM SYSTEM

// The Product Lifecycle Management (PLM) solution SMARTEAM® contains additional functions for the document management. These documents can be distributed and printed quickly and economically with the extension from SEAL Systems.

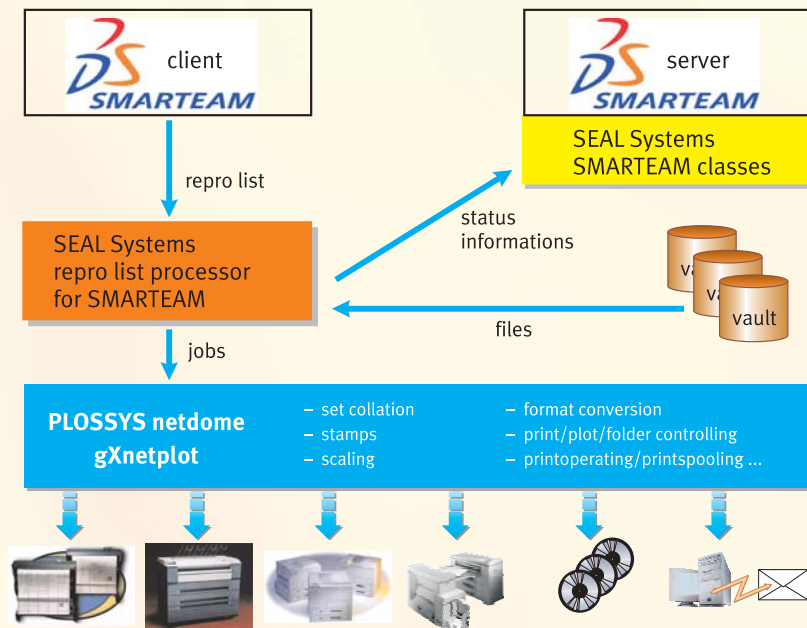
Output jobs are compiled and printed or distributed electronically within SMARTEAM. The job control facilitates the selection of device, scale factor, copies, and other control parameters, as well as stamps and watermarks. Distribution jobs are stored in SMARTEAM. So the jobs can be controlled, changed and repeated.



The integration based on SMARTEAM object classes.

The users always work in a familiar operating environment.

With the SEAL Systems Document Output Management solution, SMARTEAM becomes the integrated platform for the enterprise handling of document reproduction and distribution. Document preparation and documentation can be realized quickly and economically.



System Integration SMARTEAM®

Functions

Create Output Job

The output management functions from SEAL Systems can be linked with SMARTEAM document types. Documents, which are attainable via projects, links or direct searching, can be added to the output functions from SEAL Systems. Thereby the user can decide, whether he creates an output job first and merges the selected documents to them or whether he prints directly.

Define Output Parameters

Via the SMARTEAM object „output job“ the output parameters can be defined. These are output devices or methods, number of copies, stamp options and scaling methods.

Manage and Control Output Jobs

Each output job is stored as an independent object within SMARTEAM. So jobs can be controlled, copied or modified, and repeated.

Central Configuration of Output Devices

Output devices or queues are managed in one or more SMARTEAM class from SEAL Systems. All output devices or methods (email, web portal, ...) can be centrally customized and configured.

ALTERNATIVES OF CONFIGURATION

- Printable document classes
- Transfer of attributes for the output control (e.g. stamp texts)
- SMARTEAM® authorization for the output
- Output queues

LICENSING

Server license without restriction of the number of users.

SYSTEM ENVIRONMENT

Available for all operating systems, where SMARTEAM runs.

REQUIREMENTS

- SEAL Systems output manager gXnetplot up to release 3.5 or PLOSSYS® netdome 3.16
- PDM repro server processor for SMARTEAM (Z-RPRO)
- SMARTEAM up to release 10
- SMARTEAM client on the output management server

PRODUCT CODE

PDM-SMARTEAM



ADVANTAGES

Complete implementation within SMARTEAM

- Low training investment
- No application segregation
- Integration into the SMARTEAM authorization concept
- SMARTEAM compatibility

High user acceptance and low startup costs!

Output jobs are stored within SMARTEAM

- Job control by each SMARTEAM workstation
- Long term verification about the document distribution
- Job management and modification with SMARTEAM

Long term and convenient job management!

Output management linking via standardized repro list processes

- Wide range of descriptions of output jobs
- Job lists instead of document transfer

Quick and network optimized job transfer!

Document output management from SEAL Systems for SMARTEAM

- All functions for the modern und economic document distribution are available within SMARTEAM.
- Vector/raster/hybrid data processing for monochrome and colored masters
- Wide range of watermarks and stamp functions
- Electronic document distribution by email, fax, web portal or CD

Output management at it's best!