

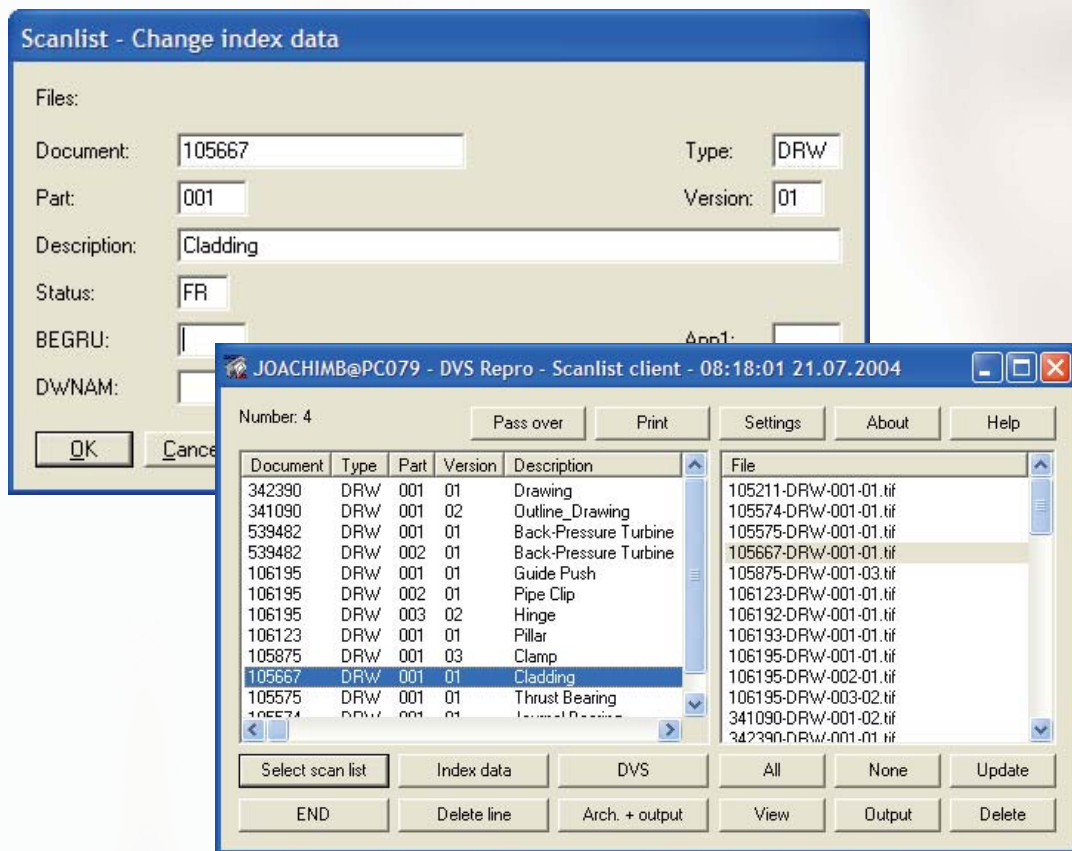


FACTSHEET

SEAL Systems Integration for SAP® PLM

DMS SCANLIST CLIENT FOR DMS REPRO

// DEMAND ORIENTED REGISTRATION OF PAPER AND MICRO FILM ORIGINALS



::: USAGE

Long loading times are avoided by „scan on demand“. The whole analog drawing and document list can be registered successively. At the same time only the immediately required documents are archived. All tasks of a scan workstation are thus done efficiently.

::: RANGE OF APPLICATIONS

- Load of DMS together with scan results
- Post scanning of „forgotten“ documents/drawings
- Automation of the process between demand and registration of drawings

Scanlist client

::: Characteristics

After the allocation of the master data to a scanned document, the document will be archived and removed from the scanlist. In addition the scanlist is checked automatically, whether the required documents have been archived. This avoids a multiple scan of one document out of different reproduction jobs.

After the complete processing of a scanlist, the associated reproduction job is released and processed automatically.

The master data of the scanlist can be completed and corrected. Post processing of the scanned documents is also possible by any integrated editors.

::: FUNCTIONS

- Select scanlist
- Print scanlist
- Process scanlist
- Display scanlist
- Delete scanlist
- Create control plot
- Refresh display
- Archive originals
 - without scanlist
 - with SAP dialog
- Storage of originals
 - on mountpoint
 - with KPro
- Create log file
- Adjustable print parameters

The scanlist client enables the processing of scanlists by utilization of the contained master data and by adding of scan data to existing DMS info sets.

Within a project for digital drawing archive often not all documents are recorded digitally. With the DMS Repro client documents can also be requested, which have not yet been scanned. During the automatic generation of reproduction jobs it can occur, that not all required documents are digitally available in the storage system. In this case the reprolist processing generates a missing list, which is transferred as a scanlist job to a scan workstation.

Via the scanlist client this list is displayed to direct scan of the required documents and to automatically update the master data, which is contained within the list. Thus image and master data are merged by mouse click.

Additionally control plots can be generated, and scanned documents can be reproduced without archiving.

For simple handling the scanlist can be printed.

::: System Environment

SAP R/3 DMS Release 3.01 and higher

DMS Repro:
Sub system to SAP DMS für digital reproduction

Operating systems:
UNIX and Windows

::: Interface

The module DMS Scanlist client is BAPI certified as part of DMS Repro SAP Interface Software.

::: Produkt Code

DMS-SLC