



FACTSHEET

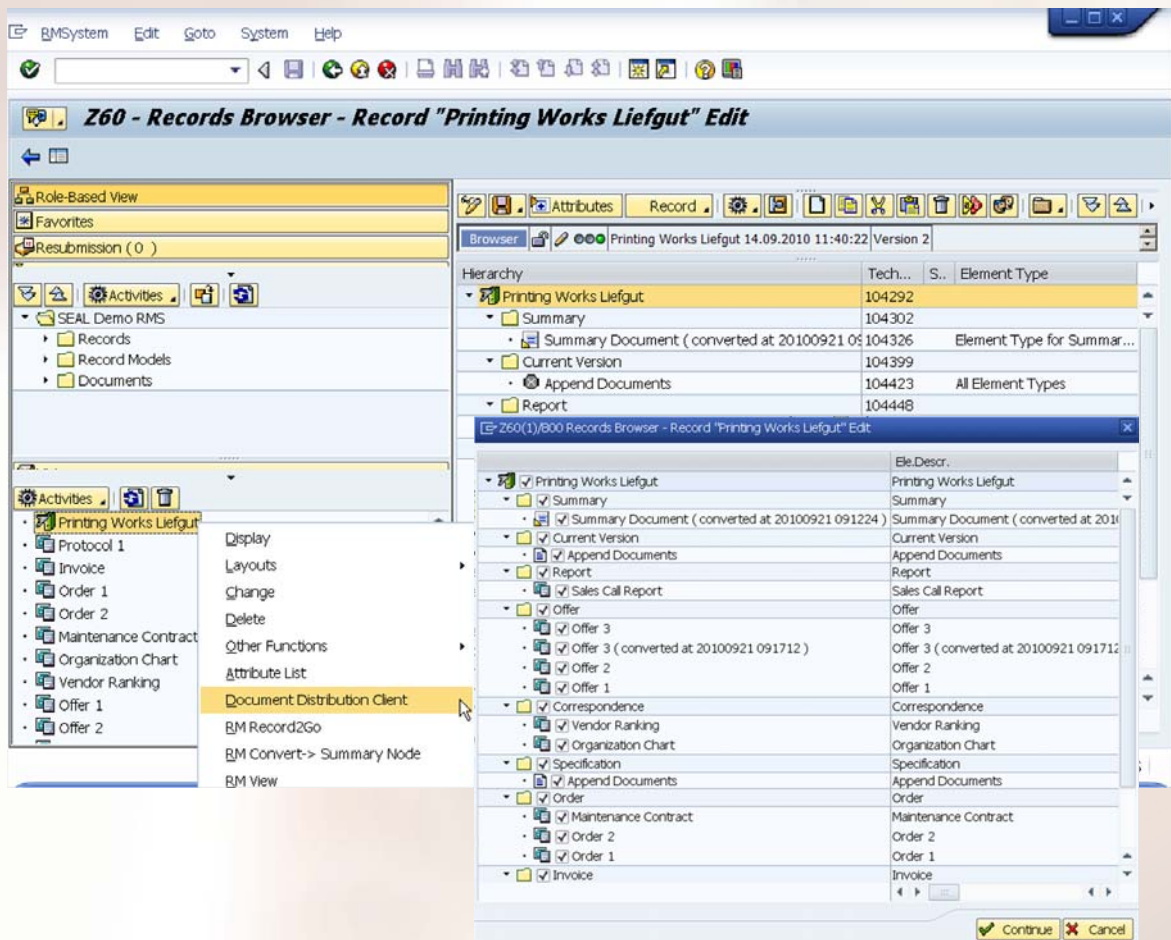
SEAL Systems Integration for SAP® Records Management

RM PRINT → RECORDS, CASES, DOCUMENTS AND BUSINESS OBJECTS PIPLINED AND ISSUED

// Single documents, business objects or even whole folders or cases can be selected through the RM Printing application and transferred to a Document Output Management System.

Based on application targets, SAP records or case management elements are selected and pipelined. Process options are set by means of business objects “Output Requests”, “Document List” and “Recipients List”. These process options control the preparation and/or distribution of the selected items via Document Output Management System.

By means of preset request options, specific preparation and distribution processes are quick and easy to address.



RM Print

::: BENEFITS

Through the context menu associated with SAP Records and Case Management elements, further processing thereof (e.g. printing, CD compiling, etc.) is quick and easy to handle. Document context information (i.e. folder numbers, status, etc.) or process information (e.g. User, date, etc.) can be provided on overall document batches.

The utilisation of request options guarantees a minimum of dialogue steps in the event of similar application cases. Alternatively, extensive dialogue options are provided for individual design of distribution requests. Documentation preparation is rendered a whole lot quicker, safer and cost-effective.

::: RECIPIENTS

- Preset request parameters
- Recipient lists/distribution options
- global/overall/private/individual setting
- Retrieval of special data

::: DOCUMENT LIST

- Easy compilation by using the SAP processes
- Dissolving of document lists (only DMS documents)
- Documenten specific output parameter
- Editing and sort functions
- Removal of duplicates
- Document/DIS display

::: INTEGRATION/ DOCUMENT DELIVERY

- Interactive as Transaction
- SAP RM from context menu to elements

::: OUTPUT REQUESTS

- Search
- Creation
- Editing
- Delete
- Store
- Output (print/process)
- Print process tracking/feedback

::: INSTALLATION

SAP-Transport

::: OUTPUT

- Through SEAL Systems DOM
- All printers and plotters of all manufacturers, brands and models
- Electronically as file, eMail, CD, or via Web
- All document file formats

::: PROCESS OPTION SETTINGS

- Warning/error occurrences
- Documents existing/not found
- Scan request/error pages
- Options: split/scan/pass

::: COMFORT SETTINGS

- User-specific assignment allocations
- Recipient-specific pre assignment allocations
- Customized device lists
- Original file selection methods

::: SYSTEM REQUIREMENTS

Web Application Server 6.20 or higher

RM PRPO
RM Reproserver

PGP/PGR/PGV/gXn
PLOSSYS® basic system or gXnetplot

::: PRODUCT CODE

RM-PRINT

::: OUTPUT PARAMETER

- Copy/page counter
- Output media/device
- Finishing options
- Scaling
- Set collation/banner and end pages
- Stamps/Watermarks
- Device-specific options

::: LANGUAGE SUPPORT

English, German, French

::: TECHNOLOGY

- Client/Server – as SAP GUI
- Browser – via SAP ITS

::: RELATED PRODUCTS AND OPTIONS

DVS-DDD
Document Distribution Director

DVS-BOM
Bill of material: document identification/output

DVS-PUR
Order: document identification/output

DVS-PRO
Production order: document identification/output

DVS-PM
Maintenance order: document identification/output

RM-VWS
Document view with additional information

RM-Convert
BC-XDC integration for SAP Records Management

RM-Print+
Extended selectable output of documents

::: LICENSING

For each SAP server environment (Test-, QA- or production system).