



FACTSHEET

PLOSSYS® netdome

P2P – PRINT-TO-PLOSSYS →

THE THIN CLIENT FOR FAST PRINT JOB ORDERING

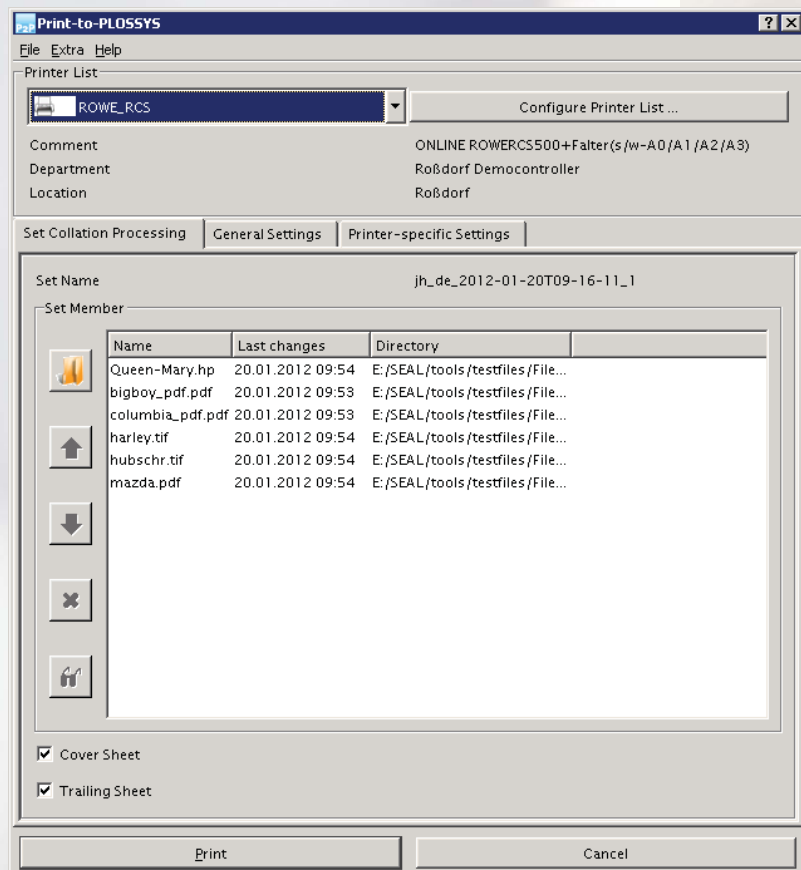
// Print-To-PLOSSYS (P2P) is the user environment of PLOSSYS netdome for an intuitive print job generation out of all applications. At development time, emphasis was laid on a uniform handling with the different versions of operating systems like Windows and UNIX. It was also considered as important to provide an easy installation and multiple possibilities for application integration.

::: CONFIGURABLE PRINT PARAMETER

All output parameters, like number of copies, output device, type of finishing, scaling, etc., are configured centrally on the plot server and therefore they are visible for all P2P users. P2P connects to the PLOSSYS server and so it provides always the actual valid parameters and device selection lists.

Besides the common actual parameters, also device specific output parameters can be configured on the plot server. This enables the add-on of certain choice buttons for defined devices, if, for example, a folding unit is connected to a plotter.

Each user can create an individual list of preferred output devices from all available devices.



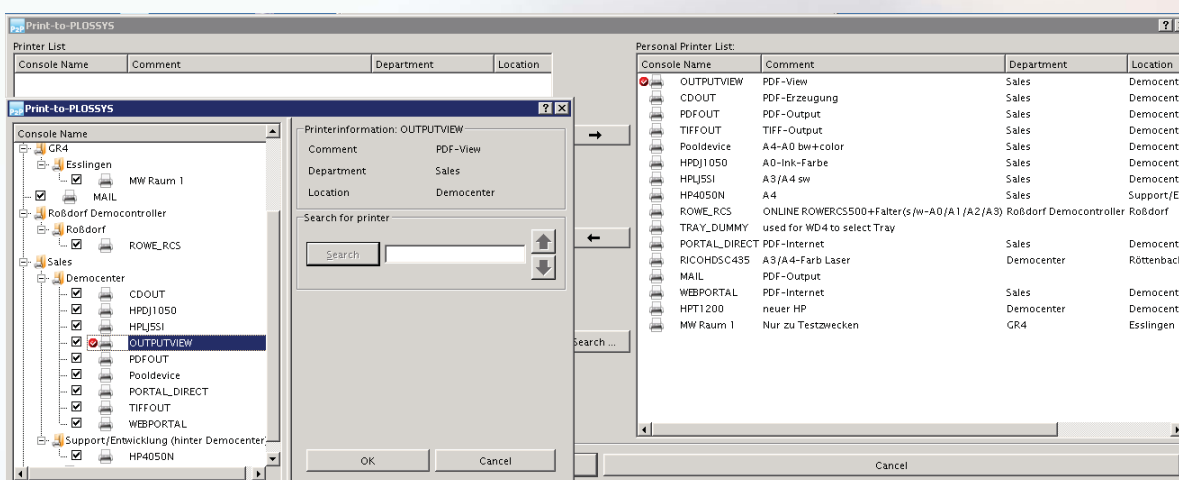
Print-to-PLOSSYS

APPLICATION INTEGRATION FOR WINDOWS AND UNIX

P2P can be integrated into the particular application environments in various ways: By using command line parameters P2P can be called from many program and script environments. The pathname of the output file is simply passed over.

With Windows print environments PLOSSYS® WIN Link is additionally included. Thus, P2P can be selected and used as a standard printer driver. Advantage: Only one printer driver installation for all PLOSSYS output devices.

Furthermore, with Windows there is the possibility of print job ordering via context menu (right mouse button at file selection) and via Drag & Drop. In this case the file to print has to be moved upon the P2P symbol on the desktop.



INSTALLATION

With Windows, P2P is installed via installshield. With UNIX an executable has to be copied onto the target directory. On the print/plot server, prepared configuration files and programs are copied.

SCOPE OF DELIVERY

CD or tape with software for the chosen operating system environment.

Documentation as PDF file.

SYSTEM ENVIRONMENT

PLOSSYS netdome and Output Manager version 3.0 or higher.

Modules: PGP, PGR or PGV

By using of PLOSSYS WIN Link PGP is mandatory.

Operating systems:

- Windows XP, Windows 2003 Server, Windows 7 und Windows 2008-R2 Server
- UNIX

PRODUCT CODE

B-P2P

RELATED PRODUCTS

B-PAD

PLOSSYS Plot Order Dialog (PAD).

PAD additionally enables:

- Generation of set collations
- Back tracking of jobs
- Selection of print files from the file system
- Creation of user defined configurations
- Storage of print jobs on file