

## PLOSSYS® netdome

### Document Output Management

- Print and electronic distribution
- Large and small size formats
- Text and graphics
- Single and bulk printing
  
- Spooling
- Conversion
- Device/Media control
- Administration/Operation



**Multi Source Input – Multi Channel Output**

## Document Output Management

Providing and distributing documents and information:

- Print and electronic distribution,
- from all sources by using uniform standards and processes,
- simply administrated, usable by all users.

All data formats from all company-wide applications: CAD, Office, digital archives, DMS, PLM, and ERP.

Text, raster, and hybrid data.

One system for all applications and processes:

### Multi Source Input and Multi Channel Output.

#### ■ Modular System

PLOSSYS® netdome can be configured exactly to the needs of the enterprise, due to its modular structure. Thus, cost effective solutions are implemented, which can be adapted according to the changing requirements.

#### ■ Advantages by System

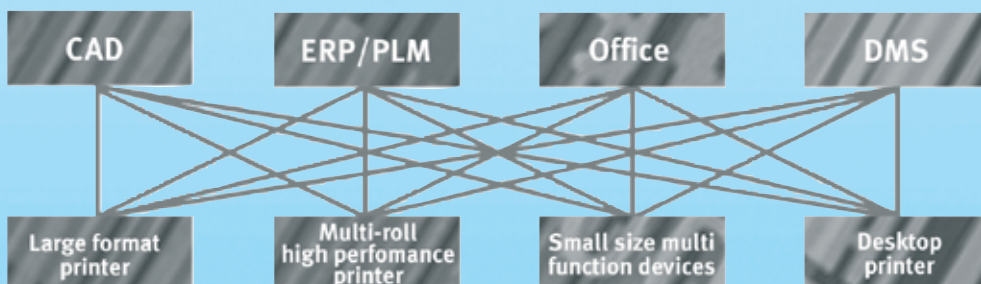
Output and distribution processes with PLOSSYS® netdome are fast, economic, and innovative:

- increased productivity through automatized procedures
- reduced administration with solid processes
- uniform application integration from established standards
- paperless distribution through electronic means instead of printing
- optimized device control for digital reprography
- high availability of devices and system components
- ISO 9000 compatible document control for certified document distribution
- investment protection by market leading product and large innovation capability
- no licensing based on the number of users for enterprise-wide implementation

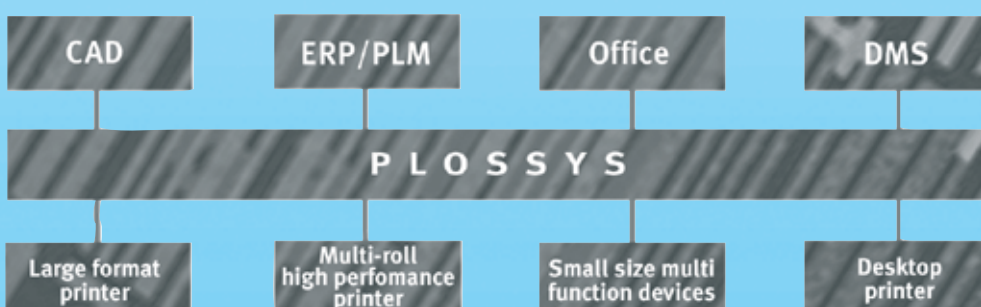
PLOSSYS® netdome prints and distributes from all applications.

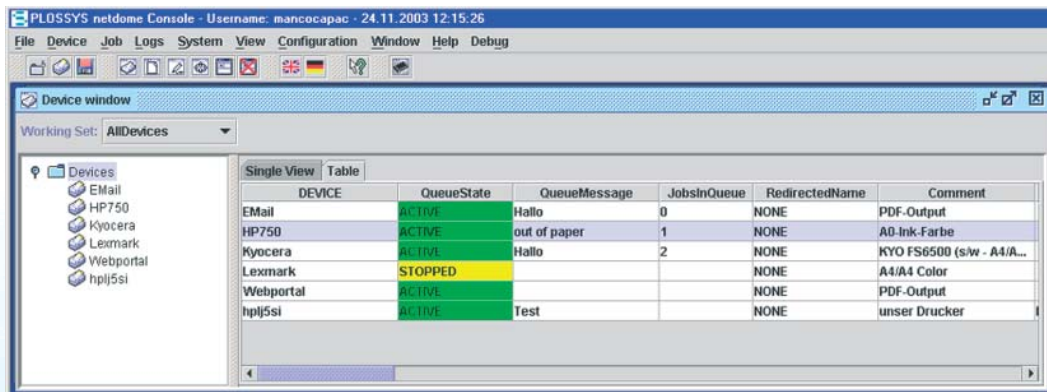
It is secure and simple to integrate.

#### Without PLOSSYS®



#### With PLOSSYS®





## Output Interfaces

### Print Output

PLOSSYS® netdome supports the print output on devices of all leading manufacturers, brands and models:

- Small size and large format output
- Desktop and central print peripherals
- Inkjet, Laser, LED
- High volume printers and standard devices

### Finishing

PLOSSYS® netdome controls and triggers the finishing equipment of the output devices:

- Folding
- Punching/filing edges
- Clipping/binding
- Sorting

### Electronic Distributing

- Print-to-file from all origin data such as TIFF or PDF
- CD/DVD output with indexing and optional automated robotic production control
- eMail distribution as attachment in standard format
- WEB Portal: notification via eMail, download via an order specific WEB Portal
- ETKAT Electronic spare parts catalog

## Administration/Operation

### Order Management

- Changing
- Repetition
- Change sequence

### Information Service

- Job tracking
- Ready messages
- System overview

### Device Management

Setup and supervision

### Accounting

Information on jobs for accounting, administration and system optimization

## User Interfaces

Uniform standard output processes simplify the operation and enables complete access to all PLOSSYS® services from all applications:

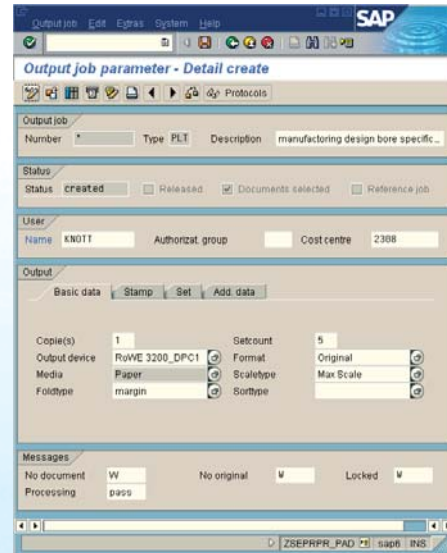
### ■ P2P Print-to-PLOSSYS®

The simple easy-to-use order dialog.

### ■ NWC WEBclient

Enables output job creation and management through a web based browser.

## Application Integration



### ■ Direct Processing

... of graphic and file formats: PDF, TIFF, Post-Script, HPGL, C907, CGM, JPEG, GIF, TXT, XML, ASCII, SAPGOF, SAPOTF

### ■ Microsoft Windows Print Processes

... are directly supported via standard Windows drivers and enhanced output drivers: improved large format support and usage of all PLOSSYS® services.

### ■ PLM and Document Management

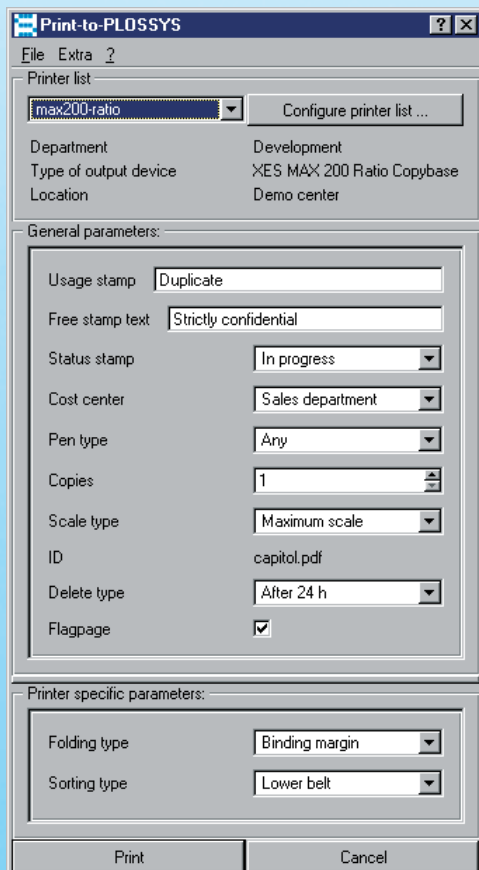
Via PLOSSYS® standard user interfaces there are direct integrations for all commercially available systems.

### ■ CAD

... output via standard interfaces, output clients or direct integration.

### ■ SAP® R/3® and mySAP® PLM

- Standard output interfaces for SAP DMS document output from DMS, CAD desktop, product structure browser, and all document interfaces
- Interface SAP spool output to all PLOSSYS® netdome periphery via BC-XOM
- Sequenced complete output of SAP output and documents for production, procurement, maintenance, and documentation



## Services

### ■ Media Management

Various kinds of paper and drawing materials can be chosen depending upon project relation.

### ■ Accounting

For cost computation, accounting and system optimization: page specific user and device specific registration.

### ■ Viewing

All outputs can be displayed on the output server via console and client functions.

### ■ Margin Printing

As a standard: configurable margin printing simplify document control and distribution.

### ■ Scaling

Many scaling options and methods are available for optimized automatic output and economic production.

### ■ Priority Control

Output and distribution jobs for optimized device usage and reduced queuing times are specifically controlled.

### ■ Color/Pen/Line Management

For all CAD requirements: pre-configured hierarchic tables control the color, pen, and line width management.

## Additional Services

### ■ Stamp/Watermark/Document Security

Dynamic text and graphic information as covered or transparent additional information during output guarantee for secure document control and distribution.

### ■ Set Collation Processing

Single pages and documents are combined to connected output jobs with optional cover sheets and trailer pages.

### ■ Pool Device

The virtual output system decides automatically, according to possible settings (format, color, finishing options, etc ...) the optimal output device or output method.

### ■ Load Balancing and System Stability

For best reliability and large output volume proven processes are available.

### ■ Bar Code Printing

Output of various bar code types on text and graphic documents for secure information control and identification.

### ■ XML

Processing and output of XML formatted data.

## System environment

PLOSSYS® netdome is available for all main stream enterprise operating systems: Windows, IBM-AIX, HP-UX, Solaris, Linux

## Overview

### ■ PLOSSYS® netdome

- Multi Source Input – Multi Channel Output
- All printer/plotter and finishing devices
- Paperless distribution through electronic
- Integrations for CAD, Office, DMS, Archive, PLM and ERP
- Simple administration
- Fast and efficient processing
- Secure document control and document providing

## Project Partners

### ■ SEAL Systems – the Project Partner

- Fast system integration
- Professional project management
- Support, service, and hotline
- ISO 9001:2000 certified
- International offices
- More than 500 installations world-wide
- Enterprise-wide evident project success

### SEAL Systems – The Digital Paper Factory

## Document Output Management with PLOSSYS® netdome

