



FACTSHEET

# easyPRIMA

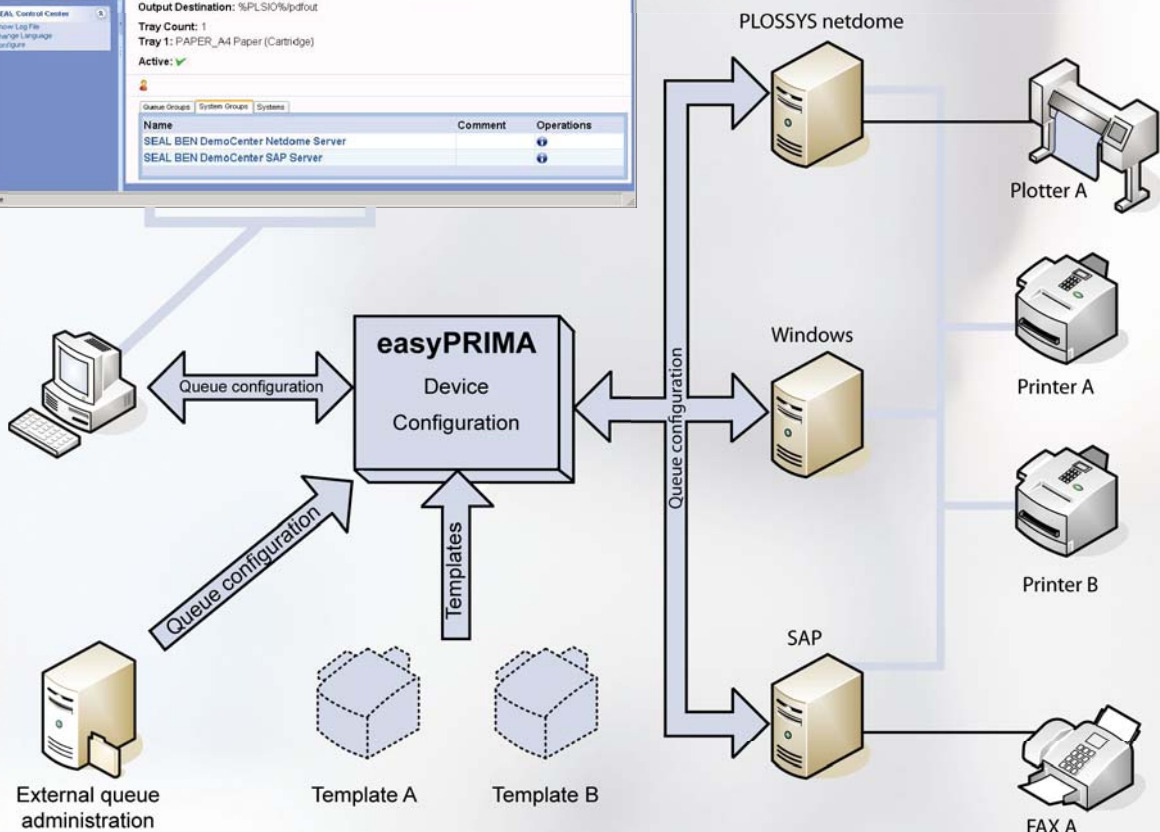
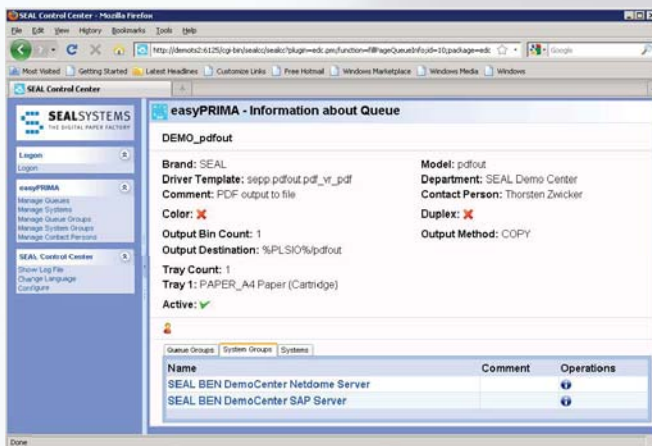
## PRINTER MANAGEMENT ..... EFFICIENT ADMINISTRATION OF PRINTERS

// For large organizations, the maintenance and administration of printers can be very **time consuming** and **costly**. In many cases, new output devices must be simultaneously supported in several output and spool systems (e.g. SAP®, Windows® and PLOSSYS® netdome). For SAP customers with multiple SAP environments (e.g. production, test, development, etc) this can be a problem as the workload to manage printers is substantial. Additionally there could be multiple Windows and PLOSSYS servers which will also increase the amount of effort required to manage the printers.

This is exactly where easyPRIMA can help.

### WHO WOULD BENEFIT FROM easyPRIMA?

Systems administrators who have to centrally configure and administer many different printers and systems.



## easyPRIMA

With easyPRIMA, the printer data stored in the OEM printer management software is extracted and stored in a **system-independent centralized database**. This consolidated & uniform printer data thus becomes freely available to all connected servers at any time. New printers can be easily **installed** and **distributed** without any specific know-how about the particular output system. An installed printer can be deleted in all connected systems. The easy-to-use **web-based environment** can be used enterprise-wide by any person who is responsible for installing or configuring printers.

### ::: FEATURES

- Easy importation of printer information from other systems such as PLOSSYS netdome, gXnetplot, SAP, MS Windows Print server
- Third party systems can be connected at any time with CSV-based interfaces
- Importation of data is achieved through automatic rule-based parameters
- Automatic printer configurations & amendments are actioned through predefined templates
- Printer data is stored in a system-neutral format
- Simple web-based user interface
- Centralized configuration
- Search, view, add, copy, change and delete devices in several systems from only one environment
- User authorization ensures that each user can only view & edit data which is relevant to them
- Automatic logging of all changes
- Configuration rollback to previous versions
- Automatic configuration distribution is available to all connected systems
- Configuration distribution on demand (for Output Manager version 4.2.1 or higher)
- Rule-based parameters for creating system specific data at upload
- Multi-server support



### ::: BENEFITS

Using the easyPRIMA web-based interface, systems administrators can now **manage all printers** in the organization across all systems with just one software solution.

Being an **open system**, the easyPRIMA interface allows quick & easy installation, integration & synchronization of the different output systems. As a result of this efficiency, easyPRIMA delivers a very quick return on investment.

easyPRIMA results in **high user acceptance** through a considerably faster and more efficient system support, whilst the ready availability of easyPRIMA allows for easy access to all output servers and their backups.