



FACTSHEET

SEAL Systems Integration for SAP®

DOCUMENT DISTRIBUTION DIRECTOR

SEARCH, COLLECT AND DISTRIBUTE YOUR SAP DOCUMENTS

// The **Document Distribution Director** (DDD) from SEAL Systems is a solution for the compilation of print and distribution jobs for SAP DMS, SAP PLM and SAP Records Management.

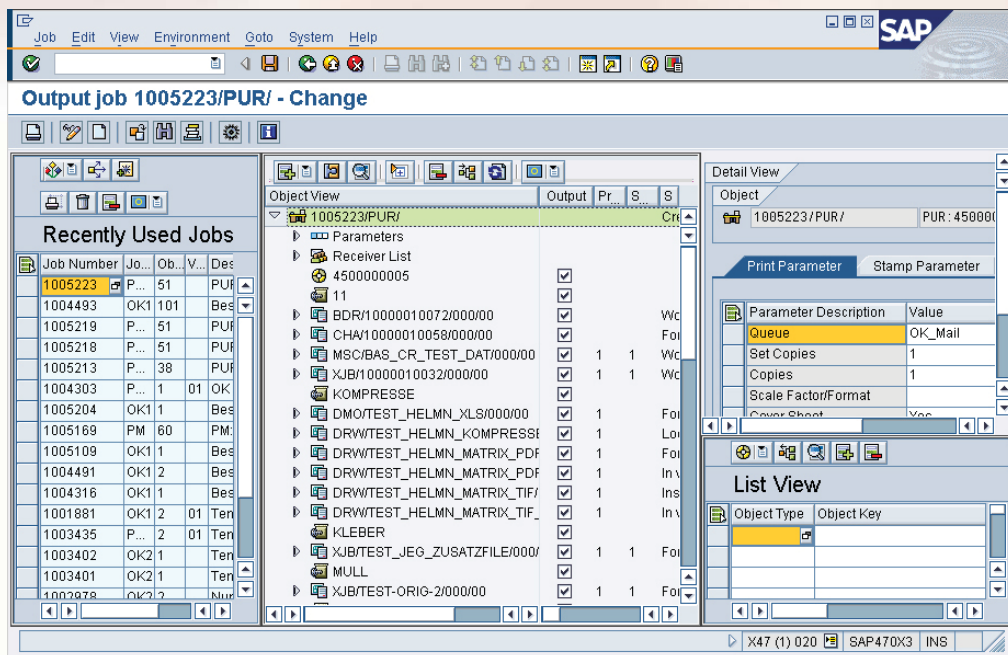
With DDD, you can search and package document files from a variety of system environments and contexts. Documents can then be **printed** or **distributed** electronically using the output management platform from SEAL Systems or SAP Spool.

DDD also enables the combination of various types of documents or lists from different sources and the **archiving** of output jobs for extended traceability.

Additionally, DDD can be integrated into many SAP transactions and processes.

End users can **create** and **edit** output jobs in a clearly arranged tree structure using a shopping cart function to create and edit output jobs and apply features like **stamps** or **watermarks** for traceability and document control. To facilitate this work, output templates, recipients and distribution lists are configurable and selectable.

Document distribution with DDD is **safe, simple** and **fast**.



Document Distribution Director

::: INTEGRATION

Output jobs are generated inside SEAL or SAP systems.

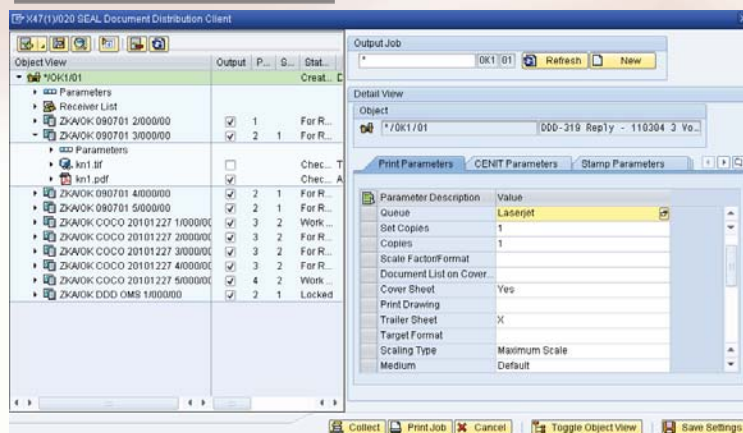
- Interactively as a transaction
- SAP DMS
- SAP Records Management
- CVoxN function „Print Originals“
- Browser for product structures
- CAD desktop
- Classification
- Structure resolution
- Customer specific applications

::: OBJECT TYPES

Objects are put into the object list interactively or when creating a new job.

- Order
- Recipient
- GOS objects
- BDS data
- DMS dokumente
- RM dokumente
- SapScript data
- ArchiveLink data

Document Distribution Client as dialog from CVOXN



::: DETAILED VIEW

Display and edit information detail of selected objects.

- Output parameters for output control (f.e. output device)
- Stamping parameters for document control (f.e. document status)
- Additional parameters for further object data (f.e. order number)
- Object data for administrative purposes (f.e. date of creation of output job)
- User configurable parameters

::: ADMINISTRATION

Administrational functions are available for each output job.

- Search
- Edit
- Archive
- Versioning
- Versioning
- Create
- Delete
- Save
- Print
- Completion information

::: DISPLAY (VIEWS)

Objects of an output job can be viewed from various perspectives.

- Working list of output jobs last edited
- Object list of an output job
- Detailed list with data of a selected object
- List view of selected objects from an output job with input option for new objects

::: RECIPIENT

- Default output parameter
- Global/private settings
- Identification of recipient specific data

::: HANDLING OPTIONS

There are useful options for handling output jobs.

- Warning/error reaction
- Document not available
- Document not found
- Scan job/error pages
- Options split/scan/pass

::: OUTPUT PARAMETER

Parameters for output jobs and their objects can be configured.

- Copies/Set copies
- Output medium or device
- Finishing options
- Scalings
- Banner/finishing page
- Stamps/watermarks
- Device specific options
- Email addresses
- Telefax numbers

::: OBJECT LIST

The object list contains all objects of an output job.

- Hierarchical tree structure
- Object type specific symbols
- Object type specific viewing mode
- Sorting function
- Delete function
- Object type specific function for adding, eg CV04N

::: OUTPUT

The output is done via SEAL Systems DOM or DPF4Publish.

- Small and large format printers of all manufacturers
- Electronically as file, eMail, CD or web
- All common archiving formats like TIFF, PDF, PDF/A
- Confirmations

::: SYSTEM REQUIREMENTS

- SAP 4.7 or higher
- PLOSSYS netdome or
- gXnetplot or
- DPF4Publish or
- DPF4BC-XDC

::: INSTALLATION

- SAP Transport
- BC sets

::: LICENSING

According to number of users