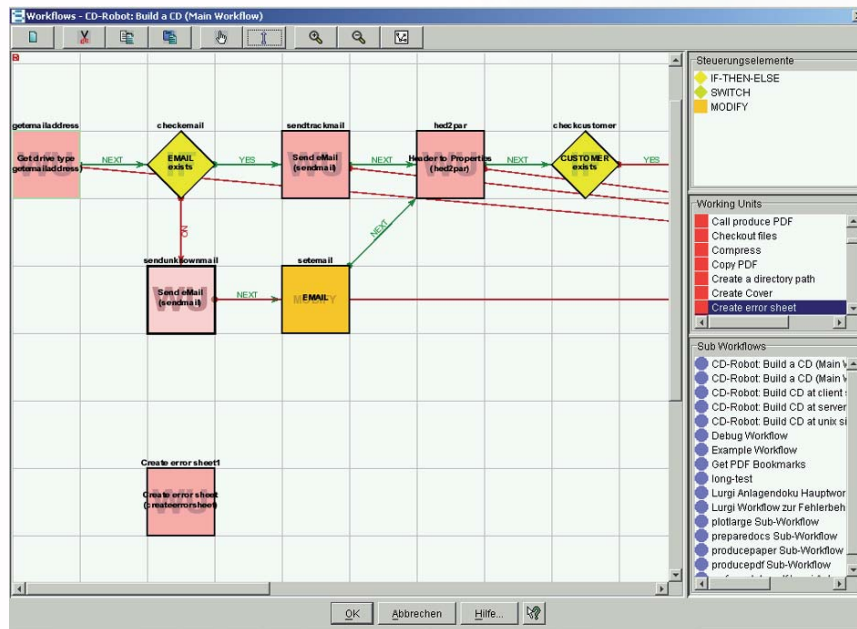


Digital Process Factory® (DPF)

DPF Editor

Easy editing and modification of DPF processes

// The DPF Editor is a tool for easy configuration of DPF processes. By using a intuitive graphical user environment, users with little programming experience can create DPF processes or change existing implemented procedures.



- ⇒ By clearly displaying of the structure of a DPF process, existing procedures can be quickly recognized and new processes can be validated easily.
- ⇒ All structure elements, which can be accessed within a DPF method, are available in the DPF Editor.
- ⇒ All working units and sub-processes of the DPF server can be integrated into the edited process via drag&drop and can be linked to each other directly or conditionally (by control elements).
- ⇒ The built in elements can be connected directly with default settings for control parameters. It can be decided, whether default settings are changeable by the process or not.
- ⇒ Additional branches can be integrated into existing processes, or process steps can be replaced or deleted.
- ⇒ Together with the DPF Director, extensive control scenario can be realized. Thus, a DPF process can be stopped during runtime by the DPF Director, can then be modified by the DPF Editor and finally continued in modified form.

DPF Editor

::: BENEFIT

Benefit 1: Reduced implementation times for DPF processes

- Configuration instead of programming
- Clear display and easy integration of all available process modules
- Easy reform of already existing partly solutions

Benefit 2: Simple operation

- With the DPF Editor anyone can create and modify DPF processes.
- Intuitive environment lay out

Benefit 3: Clear display of processes

- DPF processes are clearly displayed in a graphical workflow scheme.
- Zoom function for the navigation of complex processes
- Free positioning of process elements is possible.
- Different display methods and colors for different process modules

Benefit 4: Fast and simple change of existing processes

- Through a graphical display, quick access to existing processes is possible.
- Easy insert, delete or modification of process modules of an implemented work flow

::: INSTALLATION

Centralized web server installation.

Access via web server through a common browser as well as a single JAVA application.

::: PRODUCT CODE

DPF-EDI

::: RELATED PRODUCTS

DPF-DIR

DPF Director

::: FUNCTIONS OVERVIEW

- Create new processes
- Modify processes
- Functions for working units, sub-processes or control elements:
 - create by drag&drop
 - delete
 - move
 - connect
 - configure
- Clear display of all available working units and sub-processes of a DPF server
- Graphical arrangement of process displays

::: SYSTEM ENVIRONMENT

- DPF server (DPF base) with Windows (2000, XP, 2003), Sun Solaris 8.x, LINUX
- DPF Director
- JAVA Runtime Environment 1.3
- Main stream Web-Browser (tested with Internet Explorer, Mozilla, and Netscape)

