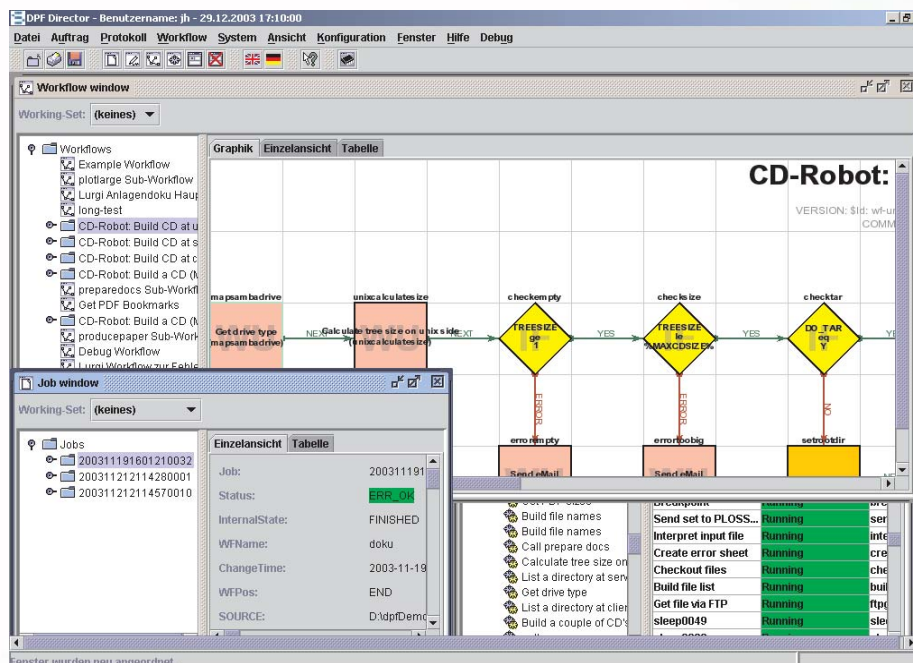


Digital Process Factory® (DPF)

DPF DIRECTOR

SUPERVISE, MANAGE AND CONTROL OF DPF PROCESSES

// DPF Director is the interactive control and supervision component part of the Digital Process Factory. Designed as a tool for the administrator, the DPF Director enables display of the status of all jobs, processes and Working Units of a DPF server at any time. For this, all available processes and Working Units of a DPF server are displayed by the DPF Director. To simplify the control for the administrator, several configurable views within different windows are offered. The processes of a DPF server can be displayed graphically by the DPF server – so, also non-programmers get an overview of the workflow structure of a process at any time.



Besides the system supervision, the DPF Director can also be used for system control: Many functions, like delete, stop, repeat, modify, are available to edit jobs. DPF Director was developed and designed according the latest Style Guide Directives based on J2EE. It is usable as an independent application or it is operable from within any browser environment.

DPF Director

::: BENEFIT

With the DPF Director the DPF server and the administrated jobs, processes, and Working Units are displayed graphically. Thus, the structure of the processes and the actual system status become transparent, controllable, and can be easily checked.

::: Job supervision and control

- Display of all jobs from a DPF server, including its status and logging information
- Viewing of all sub processes and Working Units, which have passed a job
- Jobs can be stopped, continued, repeated, deleted, and duplicated.
- Search for jobs by job characteristics (owner, property values, ...)

::: Working Units supervision and control

- Display of all Working Units of a DPF server, including of its status and logging information
- Viewing of call interfaces of a Working Unit
- Working Units can be stopped and started. They can be displayed via print and can be integrated in any process via the process „Configurator“ (optional)

::: Process supervision and control

- Display of all processes of a DPF server, including its status and logging information
- Graphical visualization of processes:
 - Display of Working Units
 - Display of the used sub processes
 - Display of object relations
- Processes can be duplicated, deleted, and printed as overview maps. They can be newly generated and modified with the graphic editor (optional „Process Configurator“).

::: Product code

DPF-DIR

::: Settings

- Definition of user specific views possible
 - Window positions
 - Window content
 - Menu and environment functions
- Filter definitions for jobs, processes, and Working Units
- Multi-Language (English or German, more being added)

::: System environment

- DPF Server (DPF Base) under Windows (2000, XP, 2003), Sun Solaris 8.x, LINUX
- JAVA Runtime Environment 1.3
- Main stream Web browser (tested with Internet Explorer, Mozilla, and Netscape)

::: Related Products

DPF-EDI
Process Configurator

