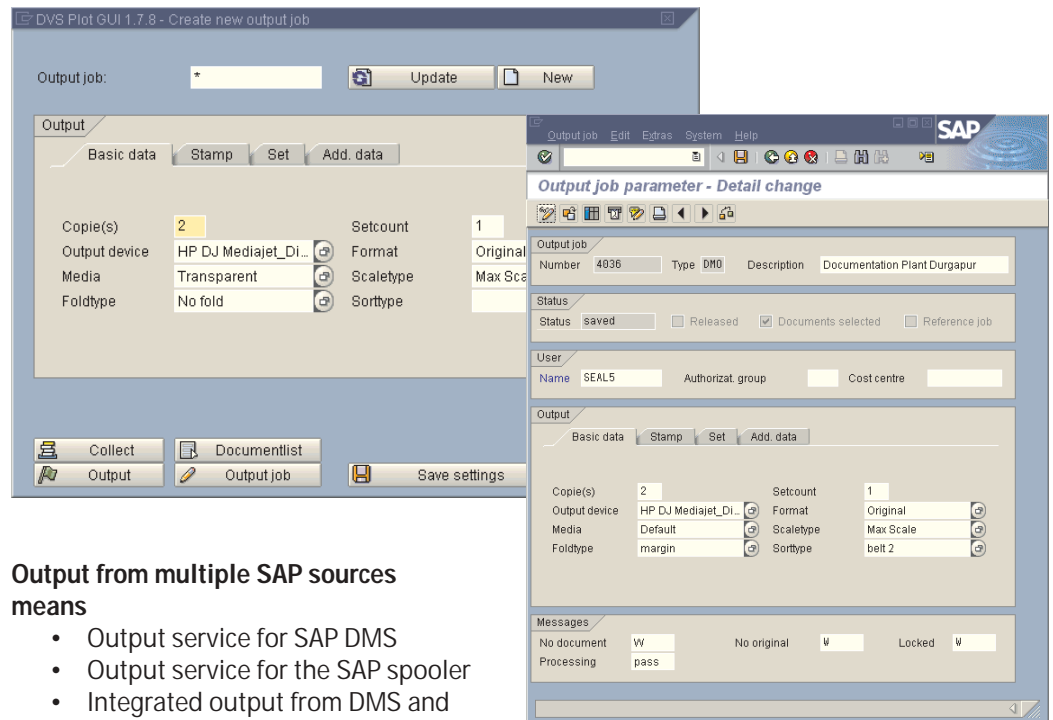


DOM
Document Output Management
for
mySAP™ PLM

Print/Plot/Repro
Digital Archiving
Document Distribution



Output from multiple SAP sources means

- Output service for SAP DMS
- Output service for the SAP spooler
- Integrated output from DMS and spool
- Use all standard SAP search functions for print tasks

Output correctly distributed:

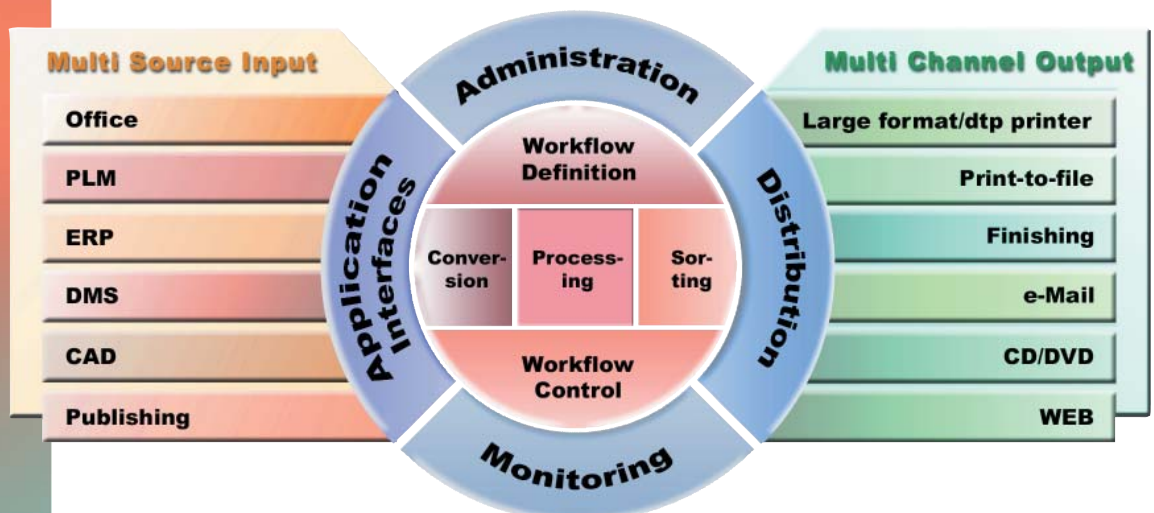
- Complete
- Correct sequence
- All printers and plotters
- On paper or electronically

More economical:

- One system for all output
- Save and efficient work flow through organized document distribution
- Reduced administration and distribution effort

Print and Repro from SAP DMS

- Function „Print Originals“ from all SAP transactions
- Collect hit lists from all searches
- Product structure browser
- Use all SAP search possibilities
- Output interface for SAP document distribution



One output system for technical and commercial documents

Document Output Management for standard SAP printing through SAP spool

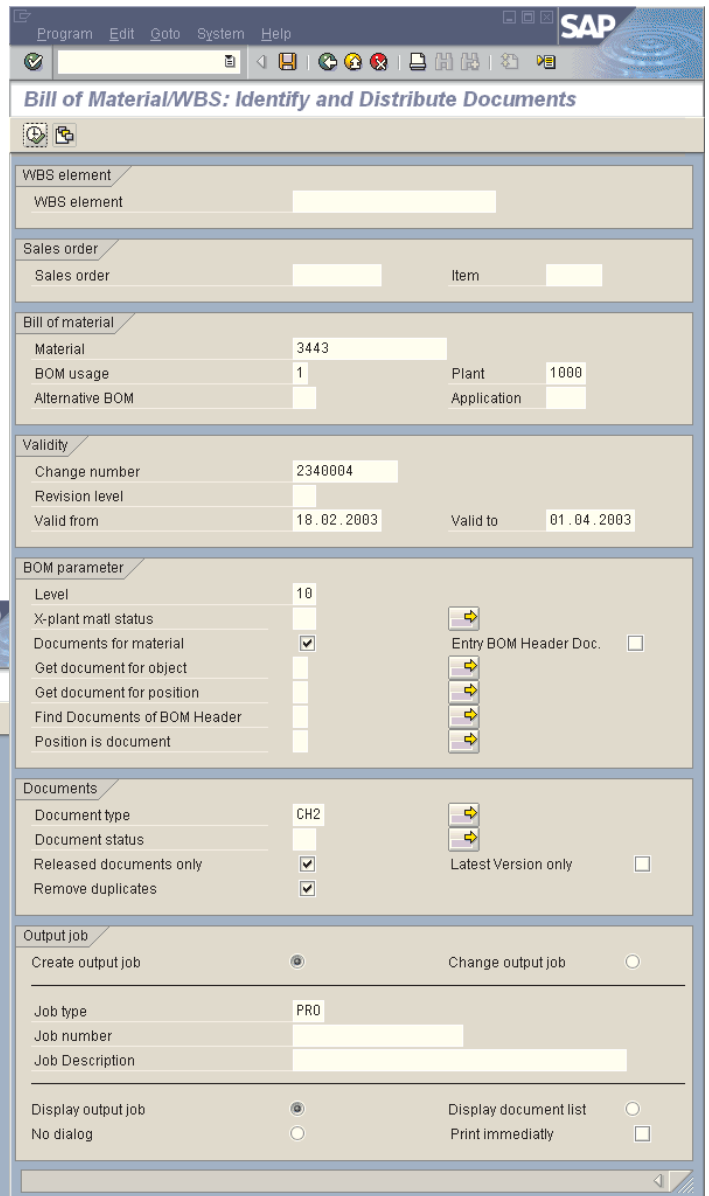
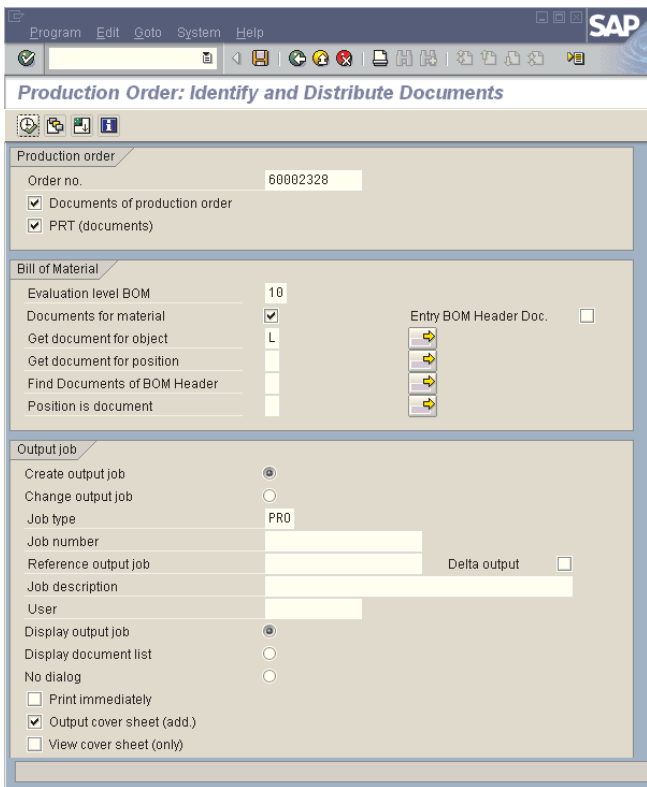
- Form printing
- List printing

Through the BC-XOM interface for

- Print distribution and tracking
- Upload of printer configurations

Processing of spool data and generic forms

- SAP GOF/OTF, also with bar code
- PostScript, PCL, TXT, PDF, ...



All documents related to

- Production order and purchase order
- Project plan
- Project BOM
- Material BOM

Everything automatically together in the correct sequence

- Schedules
- Order forms
- Instructions
- Office Documents
- Bill of material
- Drawings
- Pictures
- Documents

Automatic task related collection of documents

- Standard solution instead of individual programming
- More than just printed documents - everything together
- Automated batch processes instead of manual step-by-step collection

Secure workflow also with viewing

Include metadata from the document info record in stamps and watermarks

- for TIFF and PDF
- external or integrated viewer (Acrobat, Spicer, EAI, Imaging, ...)

DMS Repro (DMS-RPO2)

Document output management system for SAP R/3, server module for automated repro list processing with batch interface. Basic module for DMS-RGUI and DMS-RBAP.

User interface for DMS Repro (DMS-RGUI)

Interactive print ordering out of SAP GUI; with many functions for applying, processing and management of print jobs.

Plot GUI (DMS-PGUI)

Interactive print ordering out of SAP GUI via the SAP function „printing original“. Print ordering via DMS Repro or PLOSSYS® PAD.

DMS Distribution Plotting (DMS-VERT)

Distributor output module for the SAP document distribution up to release 4.5.

DMS integration for PLOSSYS® Print Job Dialog PAD (DMS-PLOT)

Interactive print ordering out of DMS with transfer of document info set data.

Conversion of SAPGOF (K-GOF)

PLOSSYS® Input filter

BAPI interface for DMS Repro (DMS-RBAP)

Use of all functions for the objects print list, output job and receiver/distributor. This Interface is suited for integrators, consulting companies and system developers.

Purchase Order (DMS-PUR)

Addition for the document output of purchase order.

Production Order(DMS-PRO)

Addition for the document output of production order.

Material List (DMS-BOM)

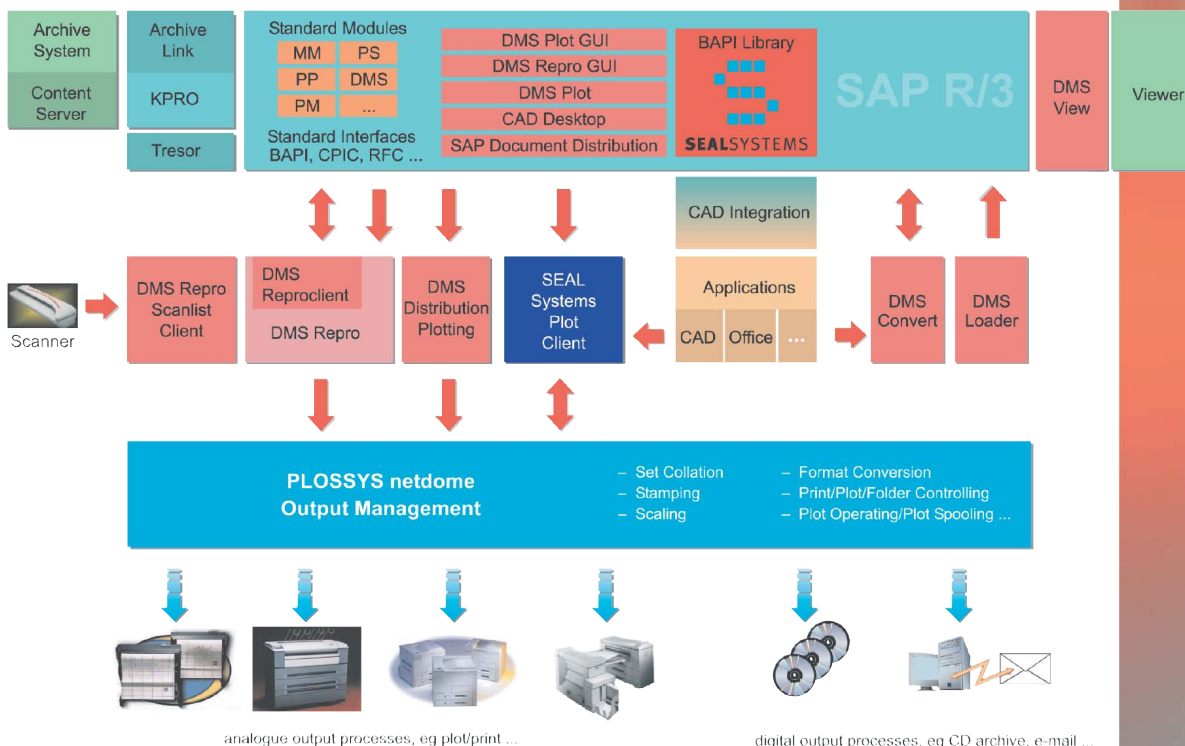
Printing documents to a bill of material.

Plant maintenance (DMS-PM)

Addition for the document output of plant maintenance jobs.

DMS View, Viewer Interface for TIFF- and PDF-Viewer (DMS-VW)

With transfer and stamping of document info set data.



Integrated Services for PLM:

- SAP Look and Feel
- Easy Install
- SAP Business Objects
- Browser and Client-Server
- BAPI Compatible

Task Oriented Output:

- Single or Set Output
- SAP Document Distribution
- Batch Oriented Document Delivery
 - for manufacturing, purchasing and maintenance
 - from material and project BOM's
- Output of text and SAP forms, as well as graphic files, together and in the right sequence
- Print or electronic distribution

Document Output Management with SEAL Systems

Leadership in technology makes your investment save

Professional consulting and installation services guarantee quick solutions and return on investment

SEAL Systems solutions for Digital Paper!

Certificate and Interfaces:

SAP certified

SAP validated

BAPI, CPIC, ITS, PP-PLT, BC-XOM, gXn, PLOSSYS®,
SEAL Systems DIM Document Input Management
for mySAP™ PLM

SAP R/3 3.1 - 4.6 /Enterprise, mySAP.com

multilingual: English, German, French

SEAL Systems is ISO 9001 certified.