



FACTSHEET



SEALSYSTEMS
THE DIGITAL PAPER FACTORY

Conversion

CONVERTWIZ WB →

EASY PDF AND TIFF CREATION

// It has never been as simple and cost effective to create long term formats from any Windows application. ConvertWIZ enables the creation of PDF and TIFF files from several different formats.

As simple as printing!

All Office, text and graphic applications with a Windows print interface can be integrated.

Advantages at a glance:

- Includes all Windows Applications
- A simple Printing Process
- Creation of TIFF and PDF Output Files
- Adapted for Terminal Servers
- Interactive and Batch Process Output
- Simple Installation and Maintenance
- Local Work Stations or Centralized Server Operations
- Convenient and Economic Licensing
- Final Merged PDF Packet

Now with PDF/A output and Workbench

The screenshot shows the 'ConvertWIZ Workbench' application window. The 'Job Files (6)' list contains:

Name	Dire...	Size	Last Modification
1seiten.ppt	T:\dh\	44,0 KB	27.01.2005 09:18:19
5seiten.ppt	T:\dh\	673 KB	23.04.2004 07:26:34
10seiten.xls	T:\dh\	45,0 KB	26.05.2004 07:54:26
23seiten.doc	T:\dh\	1,18 ...	16.06.2005 05:04:10
465x418.JPG	T:\dh\	24,7 KB	12.08.2004 09:14:52
a4.tif	T:\dh\	30,4 KB	14.08.2003 05:52:32

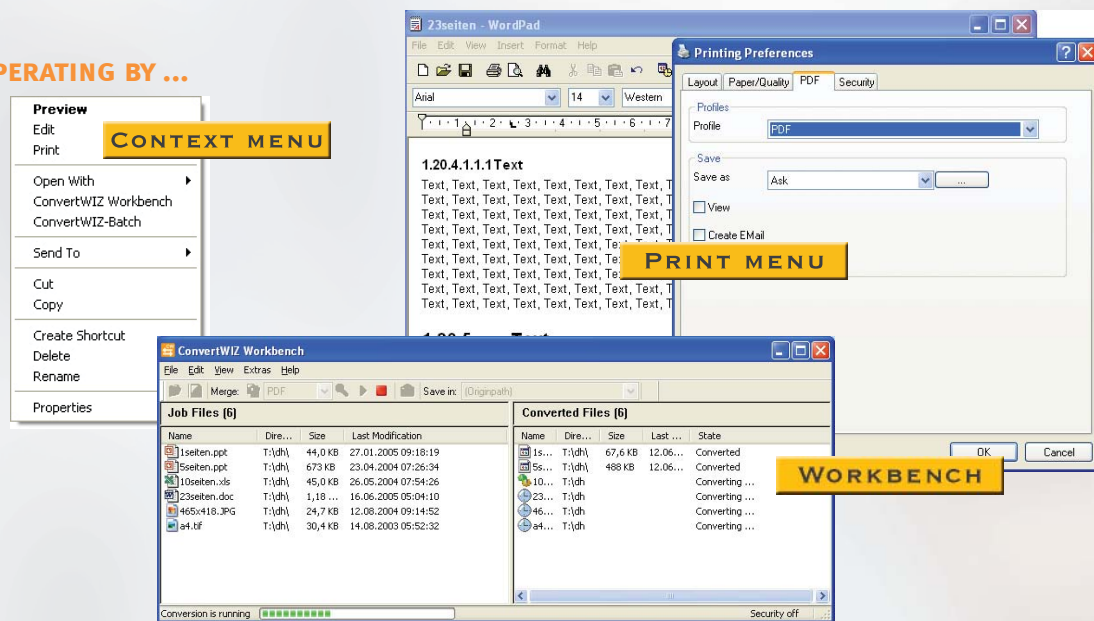
The 'Converted Files (6)' list contains:

Name	Dire...
1s...	T:\dh\
5s...	T:\dh\
10...	T:\dh\
23...	T:\dh\
46...	T:\dh\
a4...	T:\dh\

The 'Print' dialog box is open, showing the 'General' tab. The 'Select Printer' section lists 'ConvertWIZ' and 'ConvertWIZ TIFF'. The 'Page Range' section has 'All' selected. The 'Number of copies' is set to 1. The 'Collate' checkbox is checked. The 'Print' button is highlighted.

ConvertWIZ WB

OPERATING BY ...



SERVER-BASED SOLUTION

To avoid conversion loading at the desktop PC, the conversion process is done on a separate server. The result is then automatically transferred back to the original PC.

This ensures that confidential data and files are protected and provides an opportunity for enhancements and updates on the documents.

LOCAL SOLUTION

For separate workstations without connection to a central server, the software can still be installed and run as a single version. This would require an automatic switch between both running modes.

WORKBENCH MODE

In the workbench mode window, the documents can be collected and are then converted into the required target formats. After the start of the conversion, all files are automatically transferred into the new format. The workbench provides the control over this process.

CONVENIENT LICENSING

The software license provides a fixed number of conversions per day. There is no restriction on the number of user/clients. Therefore, a part time user can use ConvertWIZ as economically as a power user. ConvertWIZ provides a flexible and competitive license model for any company size and any application suite.

SYSTEM ENVIRONMENT

- Windows 7, 2003, Server 2008R2, Vista, XP

SETTINGS

- Messaging
- Resolution
- Protection rights
- Defaults
- Following actions: file Storage, viewing, eMail
- Merge
- Languages: EN/FR/GER

FUNCTIONS

Conversion via Windows print function for all Windows applications
Additional input formats with direct conversion by context menu: HPGL/2, JPEG, PDF, Post-Script, TIFF

WORKBENCH VERSION

Additional direct conversion: MS Office (DOC, XLS, PPT)
Ordering via work bench, batch operating, merge function