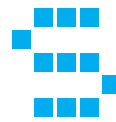




FACTSHEET



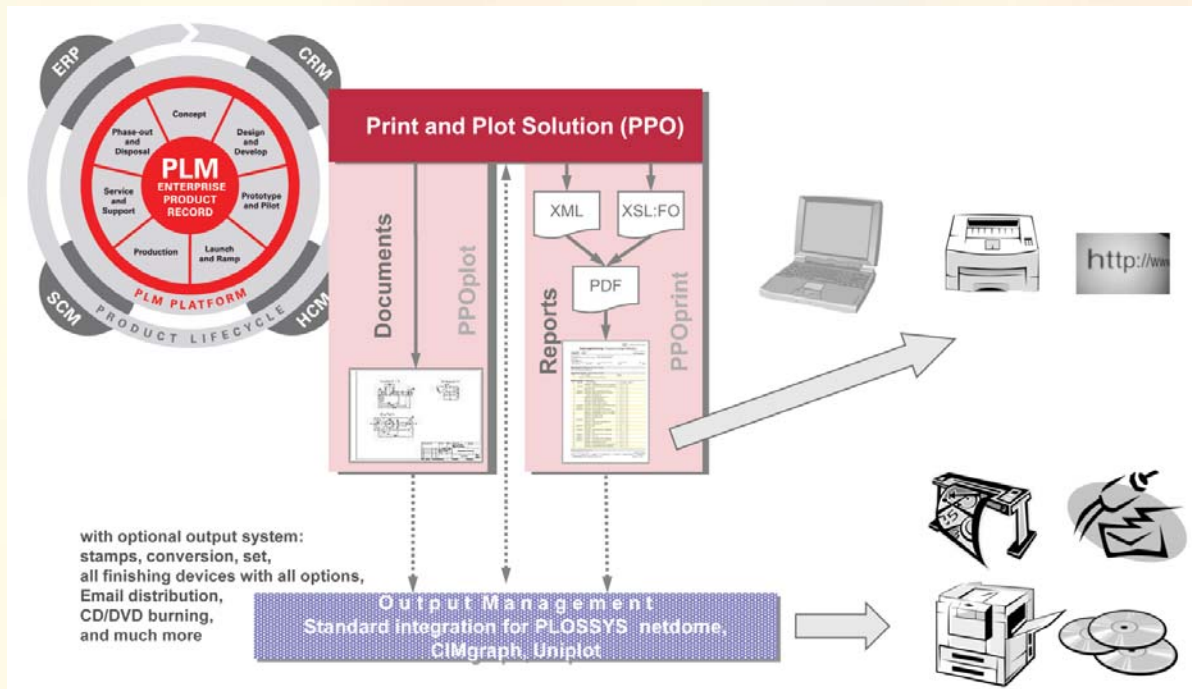
**SEAL SYSTEMS**  
THE DIGITAL PAPER FACTORY

# PLOSSYS® netdome System Integrations

## PRINT AND PLOT INTEGRATION ORACLE AGILE PLM e6 – PLOSSYS NETDOME

### COMPLETE OUTPUT MANAGEMENT FROM THE PDM SYSTEM

// SEAL Systems has developed new, high quality standard interfaces for the leading PDM/PLM systems. These integrations make the sophisticated document output management functionality of PLOSSYS netdome and gXnetplot available from within the PDM/PLM system. Furthermore modern PDM-/PLM solutions have to provide functions for long term archiving of documents.



In cooperation with our partner ots Unternehmensberatung GmbH a wide range link between PLOSSYS netdome and Agile PLM e6 was realized. The integration enables the user to print any data out of Agile PLM e6 with all capabilities of the output management system.

Every user is presented with individual options for default settings of the output parameters (e.g. output mode, layout, number of copies, output device, stamp, etc.). The complete output job is transferred to the output management

system, which handles further processes (scaling, rotation, conversion, copying, etc.).

The output can be done as a single job, but also as a collection order. The latter is stored in the data base and can be printed as a check list.

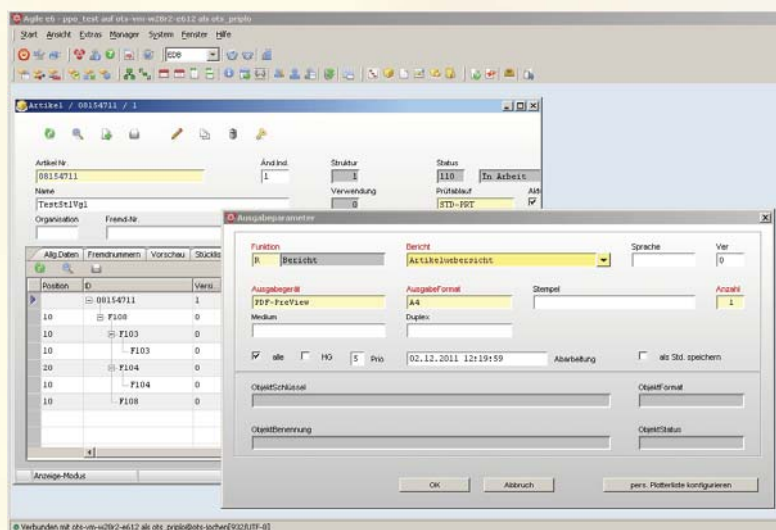
For job control an information client from the output management is available for the user. The jobs can be directly watched and output again if necessary or can be redirected in case of congested queues or device errors.

# System Integration Oracle Agile PLM e6

## CONCEPT

The integration is realized in Agile PLM e6 with standard modules and uses the program interface of PLOSSYS netdome. All information (eg output device, stamps, group definitions etc.) are read online from the output server.

The complete administration of output devices and options is done exclusively and centrally for all connected systems on the output management server. Thus, all users, regardless which application system they use, all output options are immediately and centrally available.



## FUNCTIONS

- User specific defaults of output parameters
- Call of print functions from all interfaces
- Easy, familiar printing of singular documents according of user specific defaults (also multiple-selection)
- Dynamic selection menus for output mode, devices and formats, layout, stamps etc.
- Generation of output orders of all documents of a project or item
- Storage of the output parameters for each data field in the output order
- Direct viewing of order number from the output management system for further tracking or error messages
- Detailed protocols of output activities in Agile PLM e6
- Output of standard and mandatory stamps on the output at printing from Agile PLM e6 (eg user, date, time, data field status, ...)
- For PLOSSYS and gXnetplot usable
- Full support of user right mechanisms of Agile PLM e6
- Printing via XML and XSLT: output of data as XML files, administration of XSLT files and transfer of all data to the output server.

## ADVANTAGE

- 2 standard systems incl. standard integration
- Central installation and administration on the output management server
- Common usage of all output components over different systems (PLM, ERP, CAD)
- Full integration into PDM system
- A minimum of efforts and easy handling direct from the PLM system
- Single and collective output including stamping
- Comfortable, simple, reliable printing of data base information via XML and XSLT
- Full support of all functions of output management system
- Central use of document archive for all systems components
- Easy collection of all documents and reports relating to a project, article and document set possible
- Basis and possibility for a central integration, also into other systems, eg ERP (SAP®, BaaN), ...

## SYSTEM ENVIRONMENT

- Oracle Agile PLM e5.1 or higher
- PLOSSYS netdome at least 3.x (for PLOSSYS® and gXnetplot available)
- For most UNIX systems (IBM AIX, DEC Unix, HP-UX, SGI IRIX, SUN, Solaris, Linux)
- Windows XP Professional, Windows 7 Enterprise/Ultimate 32 Bit und 64 Bit
- Clients according PDM system version