

# PLOSSYS@rchive

## Digital Document Archive

### Universal Archiving System

- Best practice user interfaces
- Supports large amounts of data
- Independent of CAD systems
- Distribution functions

### All Services

- Standardized data storage
- Searching, viewing, printing, distributing
- Integration interfaces
- Scan-on-demand



## The System

PLOSSYS@rchive is a universal archiving system for the archive and reproduction of digital data. It provides comprehensive query functions which enable quick retrieval.

Apart from linking with PLOSSYS® netdome, PLOSSYS@rchive offers further interfaces for integrating existing applications such as CAD systems, databases, viewers, editors as well as EDM/PDM systems.

### ■ Range of Applications

PLOSSYS@rchive can be used for many applications. Some of the typical tasks include:

- **Digital drawing archive for duplication:**  
PLOSSYS@rchive manages these drawings in a convenient way. The customized functions for generation and duplication of jobs are used from store service or enterprise wide for generation of repro jobs (or of drawings) up to visualization.
- **Digital archive as a solution base for introduction to a larger engineering database (EDM/PDM systems):**  
The cost-efficient and quick introduction of the PLOSSYS@rchive enables the immediate use of all scan and output peripherals. It is the perfect migration tool for introducing a construction and product database.
- **Database for PLOSSYS® netdome:**  
The duplication and output services of the archive are synchronized very well to all services of the universal print/repro system PLOSSYS® netdome. So all PLOSSYS® functions are used in an optimal way such as set processing with cover sheets, stamps, labelling of drawings, scaling, number of copies and high-performance printer operation with folder control.
- **Ideal for many industry sectors:**  
Industrial enterprises with serial/piece/commissioned production, large engineering consultants and plant operators, machine building/automotive industry, plant construction and building industry, electrical/electronic industry.

### ■ Archiving Functions

- Create, change, delete master data
- Archive and/or add documents
- Export documents and master data (local storage)

### ■ Archive Objects

All application data, graphic or text files, and descriptive master data are archived. Basically any file can be archived, such as CAD data models, vector/raster files or even text documents.

### ■ Database

PLOSSYS@rchive provides peripheral – specially optimized – database functionality, that is required for an archiving system.

Alternatively, already existing ODBC-capable database systems can be used for managing the master data (e.g. Oracle, SQL server).

### ■ Reliability

The archived description information is kept redundantly, so that the stored management information can be reconstructed, even if the archive is damaged.

Services for recovery as well as for reorganization and data stock maintenance are included in the basic system.

### ■ User and Authorization Management

Following items can be set:

- User and user group authorizations
- Login and password processes
- Document and functions authorizations
- Views and fields conditions

These items enable also the safe external archive access, e.g. via the internet.

### ■ Search Functions

- Wildcard(\*) search
- Relational search (comparison, NOT, AND, OR, ...)
- Minimum/Maximum criteria
- Search dialogs and found matches can be stored.

## Searching, Viewing, Reproducing

### ■ Data Modeling

The data model on which the archive is based can be defined freely, e.g.

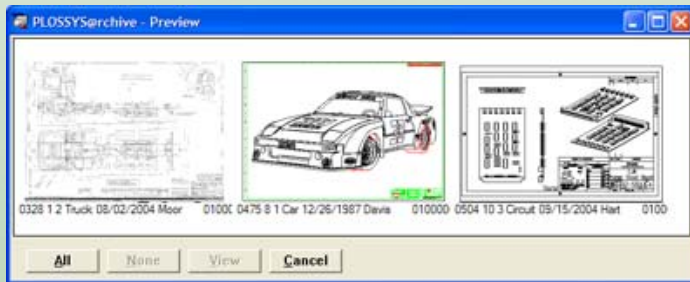
- Attribute name
- Attribute type
- Attribute length
- Creating keys
- Definition of obligatory and optional fields

For direct and quick access a key can be defined in the attributes.

### ■ Visualization

For the display of archive files all standard display programs can be integrated:

- Spicer Imagenation
- Acrobat Reader
- Windows Tiff viewer
- Application programs: Word, Excel, AutoCAD, ...



### ■ Thumbnail View

The PLOSSYS® preview functionality enables quick document selection through graphical views. Via an overview sheet with thumbnail pictures the user can simply select the required documents.

### ■ Print and Reproduce

Convenient print/repro functions enable output of document sets. Following parameters can be set:

- Output device, output media, folding type
- Number of copies and sets
- Margin printing, stamp and banner page text
- Scaling factor, target format
- Cost center

PLOSSYS@rchive enables the creation and management of recipient profiles. Recipients are addressees of print/repro jobs. Each recipient can receive an adjustable set of print/repro parameter, especially one output device. There can be centrally configured and local recipients.

### ■ Control Functions

A lot of settings are available to define system behavior:

- Output as set or single sheets
- Activating min/max criteria: Analyze of a set criterium (e.g. only display the latest version of a document)
- Define processing methods, if drawings and/or data do not exist in the archive.

PLOSSYS@rchive can process repro jobs, in which non-existing documents or master data are specified.

The user can decide, how the system is to proceed in such a case:

1. Insert of missing sheets for unavailable objects
2. Create a scan order, which can be processed quickly and safely by the PLOSSYS® scan list client. Afterwards the repro list is output/processed.
3. Immediate output of the existing documents; for missing documents a scan order is placed.

### ■ Repro List

Output jobs are managed in the archive client as so-called repro lists. A repro list can contain document information (master sets) as well as duplication information (print parameter). Following processes are available:

- Insert repro list: Document data can be added via a separate edit line. This data does not need to describe the document totally. With the function „Expand” it is possible to check, whether archive entries to this document data exists.
- Mark, cut, and copy entries (incl. UNDO functions)
- Allocate distributors/recipients
- Allocate print parameters
- Load, store, print, delete, and add repro lists

Thus project or job related lists can be created and used without a new search.

## Extensions/Interfaces

### ■ Workflow

This module enables the implementation of determined operating procedures:

- Release
- Revision service
- Quality assurance
- Supervision process

### ■ Scan List Client

The special application for the scan workstation: Request lists can be processed in a semi-automatic way. The basic functions are:

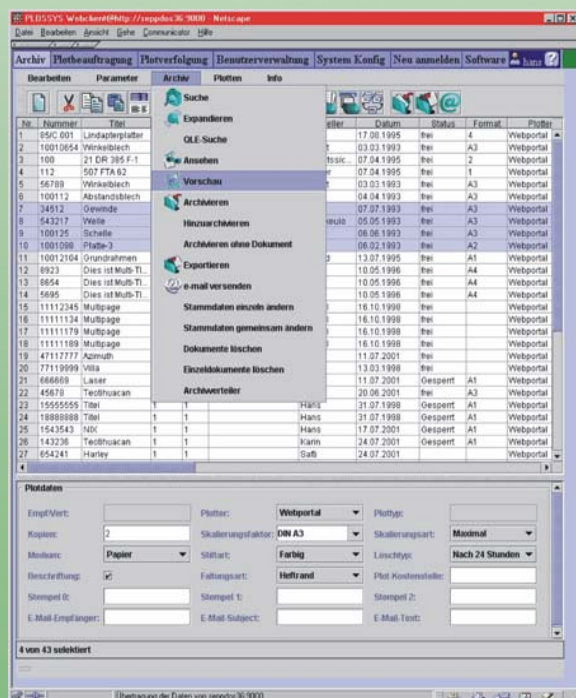
- Select, display and print the scan list
- Display and edit the scan results
- Associate requests and scan results
- Display, add and archive master data

Scan-on-demand enables a very quick archive utility.

### ■ JAVA Client

The JAVA client is the modern web based user interface for PLOSSYS@rchive. With the JAVA technology the software is installed via an internet browser. This means: One installation for all platforms, simple to manage.

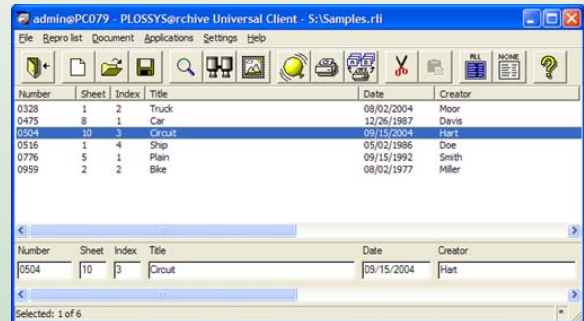
During development priority was set on creating a simple, intuitive user assistance. The functional attitudes corresponds to modern Microsoft and browser standards. All significant functions can be activated via the menu bar, colored icons and context sensitive menus.



### ■ Repro Archive Universal Client (RAUC)

The fully graphic user interface is the standard user surface in client/server technology. The operator prompting is practice-oriented and available in several languages.

During development priority was set on creating a simple, intuitive user assistance. The layout corresponds to modern Microsoft and Motif standards. Actions, which cannot be activated, are removed or shaded. All important functions can be activated via the menu bar or colored icons.



### ■ Distribution Services

Distributors are lists of recipients and related print/repro parameters.

**Archive distributor:** In the archive the distribution information is assigned to an object.

**Standard distributor:** Centrally stored and maintained distributors, which are assigned to an object by printing.

**Private distributors:** Locally stored and maintained distributors, which are assigned to an object by printing.

**Temporary distributors:** Momentary created distributor, which is assigned to an object by printing.

As distribution functions are available: Create, delete, maintain, and display distributors.

### ■ ARCLI Command Line Interface

The script interface „arcli“ (archive command line interface) enables the formulation of important archive functions also on Shell. Thus e.g. simple batch-oriented archiving and export processes can be defined in process environments.

# PLOSSYS@rchive

## Input/Output Interfaces

### ■ Load Process

Standard modules for quick loading of the PLOSSYS@rchive:

- Loading master data from PPS/ERP or other drawing management
- Loading object data from scanner, CAD or PDM
- During starting (masstransfer) and operation
- With the integration of additional steps: Rastering, rotation, ...

### ■ Repro List Processing

RLIST is the PLOSSYS® standard format for repro lists. The repro list processor enables the automated processing of complete repro jobs in batch operation. The repro list is generated in an external system and is transferred to PLOSSYS®. The documents are accessed through the PLOSSYS@rchive. For task oriented retrieval of documents, manual intervention is no longer required.



ERP/PPS  
EDB

Number	Sheet	Index	Title	Date	Creator
0328	1	2	Truck	08/02/2004	Moor
0475	8	1	Car	12/26/1987	Davis
0504	10	3	Circuit	09/15/2004	Hart
0516	1	4	Ship	05/02/1986	Doe
0776	5	1	Plan	09/15/1992	Smith
0959	2	2	Bike	08/02/1977	Miller

Selected: 1 of 6



Digital output:

- Fax
- CD
- WEB portal
- email

### ■ Raster Export

Compilation and export of extensive document lists for CD production, creation of sub-archives and archives as well as for data backup. The structuring of the objects and data can be customized task oriented.

### ■ Modular Design and Practice-Oriented Licensing

PLOSSYS® is expandable with function groups. So only the functionality has to be invested, that is needed. All PLOSSYS® services can be added later. PLOSSYS® has no licensing which restricts the number on users.

### ■ Modern System Architecture and Standards

Client/server architecture and WEB clients in TCP/IP networks for a simple system structure. PLOSSYS® is multiclient capable – all interfaces and user surfaces can be operated simultaneously.

### ■ System Environment

PLOSSYS@rchive is available for all client/server environments.

#### Server

- IBM AIX
- Sun Solaris
- Silicon Graphics IRIX
- HP-UX
- Windows server

#### Client

- IBM AIX
- HP-UX
- Windows
- Internet Explorer
- Silicon Graphics IRIX
- Sun Solaris
- Mozilla

### ■ PLOSSYS® netdome

The standard print/repro system with all services for digital document printing:

- Output on all printers including final processing
- Stamps, watermarks, margin printing and set processing
- Output operation and output management
- For CAD, digital archive, PDM and PPS

### ■ Format Converter

We have standard converters from and into TIFF/G4, HPGL/2, C907, PostScript, PDF, CGM and many other formats.



# PLOSSYS@rchive

- **Store documents digitally, retrieve and reproduce them („Digital Paper“)**
- **Quick search via intuitive dialogs**
- **Display of drawings and documents on the screen**
- **Ordering and distribution processes from the workstation or counter service**
- **Comprehensive user and authorization management**
- **Distribution control: Print jobs from PPS/PDM systems as sorted sets**
- **Efficient structure of the digital archive through scanning on demand**